

DESCRIPTION

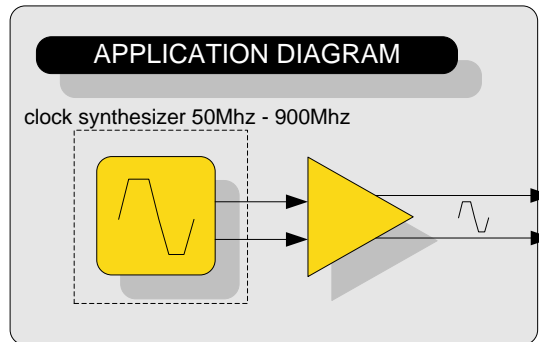
CLK6-2 is a clock source module that plugs into the *XBERT* and *ParalleX™* Chassis. With a frequency range 50 – 900MHz, the module provides 7 selectable frequency presets factory installed, covering the main bit-rates of interest. Additionally, preset 8 allows set-up of any frequency within the above range, which can be changed via an easy to use GUI or front-panel push-button switch. Front panel indicators give immediate status of selected preset frequency. Although intended for use with the EBERT pattern generator/error detector, the CLK6-2 finds a variety of other applications as a low-cost synthesized signal source.

KEY FEATURES

- 7 selectable frequency presets factory installed (figure in brackets gives the corresponding EBERT bit-rate)
 - 531.2500MHz (8.5Gbps)
 - 622.0800MHz (9.9Gbps)
 - 644.5313MHz (10.3Gbps)
 - 657.4219MHz (10.5Gbps)
 - 666.5143MHz (10.7Gbps)
 - 693.4830MHz (11.1Gbps)
 - 707.3527MHz (11.3Gbps)
- Additionally the user can set any frequency in the range 50 – 900MHz
- Differential clock output with single-ended capability (SMA Connector)
- Front panel switch for clock selection
- LabView™ drivers available
- GPIB Interface via *XBERT* Chassis.
- Small size: width 25.4mm (1")



CLOCK SOURCE MODULE PN L-6001-CLK6-2



XBERT PLATFORM: LETS YOU START SMALL AND GROW BIG



XBERT is a low-cost, modular Bit Error Rate Test Platform used for verification and test of 10Gb/s and above optical and electrical chip, sub assembly and system designs. *ParalleX™* allows users to perform several BER tests at once using a single clock source. The system is ideal for developers desiring to run simultaneous BER tests on parallel interfaces or multiple independent interfaces. *XBERT* and *ParalleX™* are scalable so users can start off with a single channel and add modules to grow the system. Manufacturers can realize great savings by taking advantage of the *XBERT* and *ParalleX™* system's scalability to perform parallel testing in volume production environments.

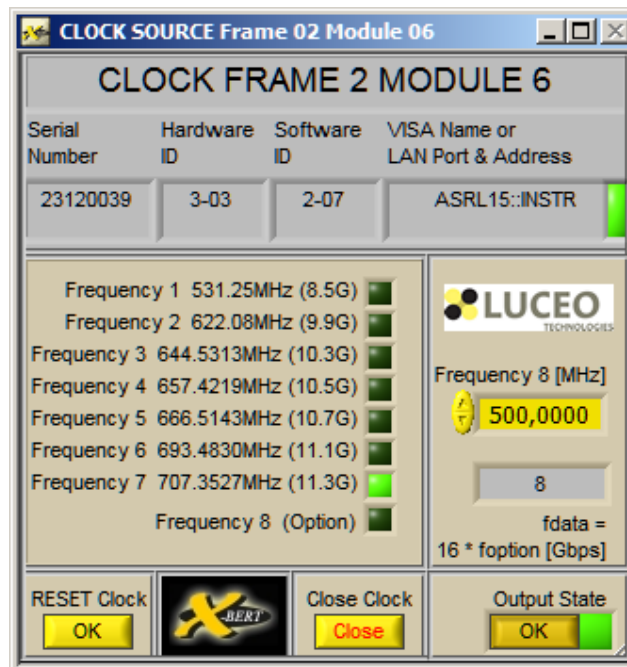
Clock Source Module PN L-6001-CLK6-2

KEY PERFORMANCE PARAMETERS

PARAMETER	SYMBOL	Min	Max	UNIT	NOTE
Clock Rate in 7 steps	CR	531	707	MHz	1
Clock Rate Continuous	CR	50	900	MHz	
Clock Output Level Channel P or N Single-ended	D _{outP/N}	550	950	mV _{pp}	Others available on request
Differential Clock Output Signal (D _{outDiff} =D _{outP} -D _{outN})	D _{outDiff}	1100	1900	mV _{pp}	
Differential Output Impedance	Z _{outDiff}	90	110	Ω	
Operating Temperature	T _{OP}	0	40	°C	Ambient temp.

Note:

- 1 The following 7 frequency presets are factory installed: 531.25MHz, 622.080MHz, 644.5313MHz, 657.4219MHz, 666.5143MHz, 693.4830MHz, and 707.3527MHz



GUI: allows selection of preset frequencies, or any frequency within the range 50 – 900MHz



Am Borsigturm 13
13507 Berlin-Germany
+49 30 814 512 40 00 ph
+49 30 814 512 40 20 fax
www.luceotec.com
sales@luceotec.com

